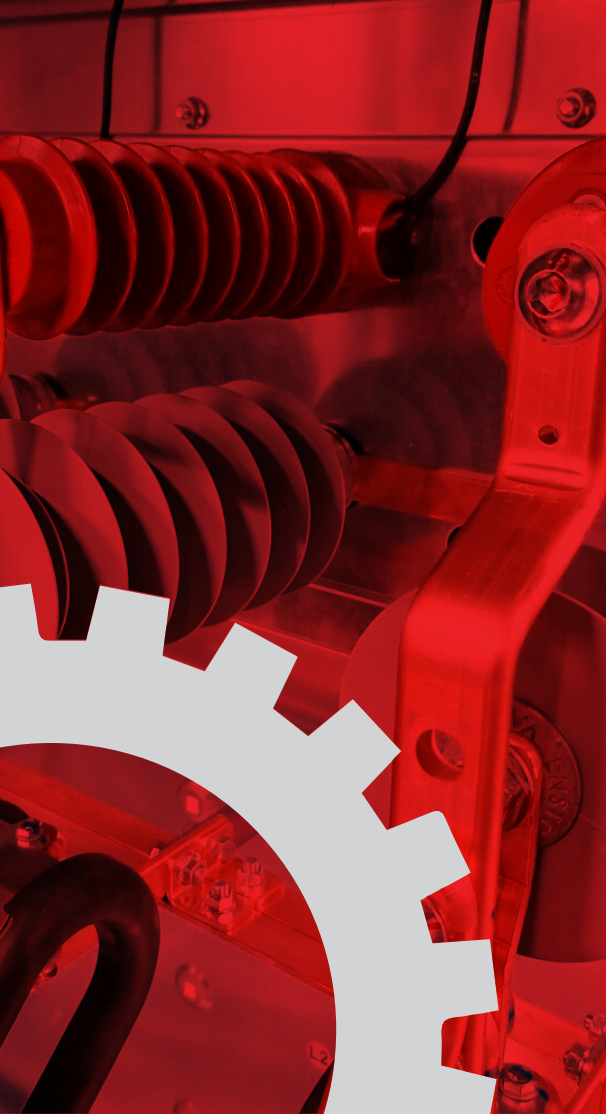




# COMPANY PROFILE



# TABLE OF CONTENTS

- 01 ..... INTRODUCTION
- 02 ..... ABOUT US
- 03 ..... WHO WE ARE
- 04 ..... VISION, MISSION & VALUES
- 05 ..... CORE SERVICES
- 06 ..... TARGET MARKET
- 07 ..... WHY CHOOSE SYPRO
- 08 ..... CORE TEAM
- 09 ..... PARTNERSHIPS
- 10 ..... CONTACT US



# Introduction

**Sypro Engineering Company Limited** prides itself on delivering top-notch maintenance services for mining and construction equipment, electrical systems installation, consultancy, and supply chain solutions.

Our team of experienced professionals ensures that projects involving hydraulic and pneumatic systems, electrical installations, drill rig rebuilds, major component overhauls, and equipment hire are delivered with unmatched professionalism and safety.

We serve mining companies, construction firms, industrial facilities, and engineering contractors with tailored solutions aligned with OEM standards and international best practices.

# About us

**Engineering Reliability.  
Driving Productivity.**

## Sypro Engineering Company Limited

Is a professional engineering services company specializing in maintenance, supply, consultancy, and technical support for mining, construction, and industrial electrical systems. We deliver reliable, innovative, and cost-effective engineering solutions that enhance equipment performance, operational efficiency, and safety.

With a strong presence in Tanzania's mining and construction sectors, Sypro Engineering Company Limited partners with organizations to maximize productivity, reduce downtime, and extend equipment life cycles through world-class engineering services.





# Who we are

---

Sypro Engineering Company Limited is a Tanzania-based engineering firm providing end-to-end maintenance, technical support, equipment supply, and consultancy services for mining and construction industries.

Our team brings over 10 years of hands-on engineering experience, ensuring every project is delivered with precision, safety, and compliance.

We combine technical expertise, innovative solutions, and a client-focused approach to deliver sustainable engineering solutions that drive operational excellence.

# Vision, Mission & Values

---

## Our Vision

To revolutionize industrial maintenance by delivering innovative, sustainable, and technology-driven solutions that empower mining, construction, and oil & gas industries to operate safely, efficiently, and responsibly.

## Our Mission

To be Africa's most trusted partner in delivering innovative, reliable, and world-class engineering solutions for mining, construction, and oil & gas industries.

## Core Values

- **Safety First:** Safety is at the center of everything we do.
- **Excellence:** Delivering high-quality engineering solutions with precision.
- **Integrity:** Ethical, transparent, and accountable business practices.
- **Innovation:** Applying modern technologies and engineering best practices.
- **Customer Focus:** Tailored solutions aligned with client needs.





# CORE SERVICES

## 1 Maintenance Services

We provide preventive, corrective, and predictive maintenance services to ensure optimal equipment performance and minimize downtime.

**Key Services:** - Preventive and condition-based maintenance

- Unplanned corrective maintenance and troubleshooting
- Predictive maintenance and failure analysis
- Major component rebuilds and complete equipment rebuilds (including drill rigs and construction equipment)
- Equipment condition audits and technical assessments
- Maintenance service agreements and long-term technical support contracts

# CORE SERVICES

## 2 Supply Chain Management & Spare Parts Supply

We provide procurement and supply solutions for major components, complete equipment, and spare parts.

**Key Services:** - Inventory management and stock optimization

- Procurement and logistics coordination
- Spare parts supply and OEM advisory services
- Technical guidance on equipment selection and optimization





# CORE SERVICES

## 3 Technical Support & Training

We provide technical assistance to ensure uninterrupted operations and enhance workforce competency.

**Key Services:** - On-site technical support and troubleshooting

- Remote diagnostics and technical assistance
- Equipment operation and maintenance training programs

# CORE SERVICES

## 4 Fire Suppression Systems Installation & Maintenance

We design, install, and maintain fire protection systems to enhance safety in industrial and commercial facilities.

**Key Services:** - Fire system design and engineering

- Selection and installation of detectors, alarms, sprinklers, and suppression agents
- Routine inspections, testing, and system maintenance





# CORE SERVICES

## 5 Engineering Consultancy Services

We provide strategic engineering consultancy to improve operational efficiency, safety, and equipment performance.

**Key Services:** - Maintenance strategy development and SOP creation.

- Technology integration and equipment misuse prevention solutions
- Equipment performance improvement programs
- Technical advisory on fleet acquisition and system upgrades

## 6 Mining & Construction Equipment Hire

We provide reliable equipment hire solutions for mining and construction projects.

**Available Equipment:** - Compactors

- Generators
- Stationary compressors
- Water pumps

**Flexible Rental Options:** - Daily rentals

- Weekly and monthly rentals
- Seasonal rentals

**Support Services:** - Delivery and pickup

- Maintenance and repairs
- On-site technical support
- Operator training
- Safety inspections and compliance assurance



# TARGET MARKET

---



## Sypro Engineering Company Limited

serves a diverse range of clients including: - Mining companies (large-scale and small-scale miners)

- Construction and infrastructure companies
- Industrial facilities and manufacturing plants
- Power and electrical infrastructure projects
- Engineering and EPC contractors
- Oil and Gas industry

# WHY CHOOSE SYPRO ENGINEERING

- 1 Proven technical expertise with experienced engineers
- 2 Comprehensive one-stop engineering solutions
- 3 OEM-aligned maintenance practices
- 4 Strong safety and compliance culture
- 5 Customer-centric and flexible service delivery



# CORE TEAM

**Sypro Engineering Company Limited** is led by a team of experienced professionals with strong expertise in mechanical, electrical, hydraulic, and mining systems.



## James Makima Biseko

Managing Director

He is the **Managing Director of Sypro Engineering Company Limited**, bringing over 20 years of engineering, mining, and executive leadership experience across East and Southern Africa.

He holds a BSc in Electromechanical Engineering from the University of Dar es Salaam and has held senior leadership roles with global industry leaders including Epiroc and Atlas Copco.

James has led major drilling equipment projects, contract management portfolios, and high-value mining operations for leading companies such as AngloGold Ashanti and First Quantum Minerals. His expertise spans strategic management, project execution, revenue growth, operational performance, and customer partnership development.

As Managing Director, he drives the company's vision, corporate strategy, and sustainable growth while ensuring operational excellence and long-term client value.



## Mayala Lucas Kanagana

Technical Director

He serves as Technical Director of Sypro Engineering Company Limited, with more than two decades of specialized experience in electrical engineering and mining equipment systems.

A graduate of the Dar es Salaam Institute of Technology, Lucas has built extensive expertise through senior technical roles with Epiroc and Atlas Copco, supporting both surface and underground mining operations across Africa.

His core competencies include advanced electrical and hydraulic systems, Rig Control Systems (RCS), high-voltage conversions, fleet reliability optimization, and technical support management for major mining operations including Geita Gold Mine and Barrick Gold sites.

As Technical Director, Lucas leads all technical operations, engineering standards, equipment reliability programs, and field service excellence across the organization.



## Winifrida Benedict Lekule

HR Manager & SHEQ

She is an experienced Human Resources and SHEQ professional with over 10 years of expertise in HR strategy, ISO systems implementation, regulatory compliance, and organizational development across multiple industries.

She holds a Bachelor of Arts and Education and a Master's Degree in Human Resource Management. She is a Certified ISO Lead Auditor (ISO 9001:2018), Certified Auditor under ISO 19011:2018 guidelines, and Certified Internal Auditor for ISO 45001:2018 and ISO 14001:2015, with strong knowledge of Tanzania Mainland and Zanzibar labor laws.

At Sypro Engineering, she leads HR and SHEQ functions, ensuring compliance, workforce optimization, ISO standards implementation, and continuous improvement aligned with the company's operational and strategic objectives.



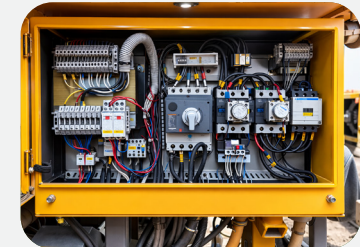
# KEY PROJECTS & CLIENTS

## Key Projects

- Drill rig rebuild and major component overhaul for mining operations.
- Preventive and corrective maintenance programs for heavy construction equipment.
- Electrical installation and substation maintenance for industrial facilities.
- Fire suppression system installation for mining and industrial sites.
- Equipment condition audits and technical advisory services.

## Selected Clients

- Mining companies
- Construction and infrastructure contractors
- Industrial manufacturing plants
- EPC contractors and engineering firms
- Power and electrical infrastructure developers



# ( SHEQ )-SAFETY, HEALTH, ENVIRONMENTAL AND QUALITY POLICY.

---

We are committed to upholding the highest standards of Safety, Health, Environment, and Quality (SHEQ) in all our operations across Africa.

We prioritize the well-being of our employees, clients, and communities by fostering a safe and healthy workplace, minimizing environmental impact, and delivering services that meet and exceed international quality standards.

## Our SHEQ Commitments

- Compliance with Tanzanian laws and international safety standards
- Hazard identification, risk assessment, and control implementation
- Provision of training, PPE, and safety awareness programs
- Environmental protection and sustainable engineering practices
- Continuous improvement through monitoring, audits, and corrective actions

At Sypro Engineering Company Limited, safety is everyone's responsibility.

# CERTIFICATIONS

Sypro Engineering Company Limited aligns its operations with international standards and best practices including: -

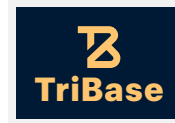
- ISO 9001 – Quality Management Systems
- ISO 45001 – Occupational Health and Safety Management Systems
- ISO 14001 – Environmental Management Systems
- OEM Maintenance Standards and Manufacturer Guidelines

Certification process planned / in progress where applicable



# PARTNERSHIPS

- Original Equipment Manufacturers (OEMs)
- Spare parts suppliers and distributors
- Engineering contractors and EPC firms
- Local and international technical partners
- Mining and construction industry stakeholders



# CONTACT US

---



 Buyagu, Geita – Kakola Road, Tanzania

 +255 696 301 030

 [info@sypro.co.tz](mailto:info@sypro.co.tz)

 [www.syproengineering.co.tz](http://www.syproengineering.co.tz)

Sypro Engineering Company Limited - Reliable Solutions for Sustainable Operations. |



[info@sypro.co.tz](mailto:info@sypro.co.tz) | [www.syproengineering.co.tz](http://www.syproengineering.co.tz)